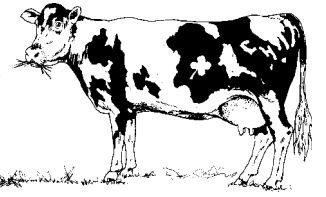




# The Curran Homestead

*A Turn-of-the-Century Living History Farm & Museum  
at Fields Pond in Orrington, Maine*



P.O. Box 107 • Orrington, ME 04474-0107 • Tel. (207) 945-9311 • Fax (207) 942-9914

## Corporate Officers:

President  
John Mugnai  
Vice President  
Cathy Martinage  
Secretary  
Jerry Hughes  
Treasurer  
Irv Marsters

## Past President

Richard Stockford

## Honorary Board

Carroll Adams  
Miriam (Mim) Hart  
Helen Tupper Southard

## Board Members

Robert Croce  
Fred Hartstone  
Donna Holyoke  
Robbi Hughes  
Karen Marsters

## Volunteer Advisor

**Facilities & Equipment**  
Wayne Killam

## Historian Emeritus

Brian Higgins

## Clerk of the Corporation

Nathan Dane III, Esq.

*Please join us!*  
*It's our way of saying*  
*"Thanks!"*

## NOTICE OF ANNUAL MEETING & RECOGNITION DINNER

No Charge for Members, Donors, & Honored Guests  
All Others: \$15 Adult, \$8 Children

Reservation Required – RSVP by Monday, January 14, 2008  
with Carroll Adams, Tel: 989-2430  
or Irv Marsters, Tel: 945-9311; Fax: 942-9914;  
Email: [irv@bangorlettershop.com](mailto:irv@bangorlettershop.com)

Please be our guest for the **Annual Meeting and Recognition Dinner at 5:30 p.m. Wednesday, January 16, 2008 at the Oriental Jade Restaurant**, Bangor Mall Boulevard, Bangor. The dinner is sponsored by Bangor Letter Shop, so there's no charge for members (just pay your 2008 dues in advance or at the door), donors and honored guests. **Reservation is required on or before Monday, January 14.**

This has been a "Challenging...But Satisfying" year for the Curran Homestead! You can hear all about it from Curran Board members as we present "The Year in Review." Join us as we **celebrate** the accomplishments, **recognize** our volunteers, and donors, and **roll out** our plans for 2008. *We'd love to have you join us!*

*"Fundraising is the gentle art  
of teaching the joy of giving."*

*– Henry Rosso  
1917 - 1999*

## PLEASE RENEW YOUR DUES / SUPPORT FOR 2008 NOW

**Your continued support as a member is very important to us!** The revenue from dues provides the critical support that keeps the Farm running—lighted, heated, insured and safe throughout the year! It's the foundation upon which all of our activities are built. **Dues paying members get discounts** at our events and the gift shop, are the first to receive event information and our **occasional newsletter** free, and **complimentary admission** for members (Student, Individual, Family, Business) and donors to the Annual Meeting and Recognition Dinner.

You can even **bring your 2008 dues and pay at the Annual Meeting** or use the coupon in the attached newsletter to send it to us in advance.

**2008 is our 17th Anniversary year and we'll be sure to provide you with plenty of opportunities to volunteer, if you want, or just to enjoy the farm and events, if you'd rather.**

**Please do consider an additional contribution** to support our "Just Imagine" education program for youth groups and our continuing restoration work and public events.

**Can we count on your support?** Thanks in advance for whatever you're able to do.

Sincerely,

John Mugnai  
President

Irv Marsters  
Co-Chairs, Membership and Community Support Committee

Fred Hartstone  
Co-Chairs, Membership and Community Support Committee